

White Plains  
(914) 946-4850

Phone  
(203) 888-4531

Telefax  
(203) 888-6247

## SOILTESTING, INC.

140 OXFORD ROAD - OXFORD, CONN. 06478-1943



SOIL TECHNOLOGIES\*

140 Oxford Road

Oxford, CT 06478-1943

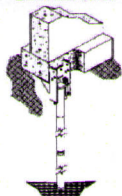
Phone: (203) 888-4531 FAX: (203) 888-6247

White Plains, NY: (914) 946-4850

\* A DIVISION OF SOILTESTING, INC.

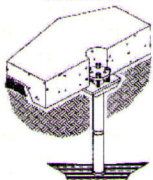
### Croton On Hudson, NY Underpinning Project

#### SETTLEMENT



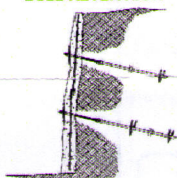
Foundation Underpinning with  
Atlas Piers® Resistance Products

#### CRACKING



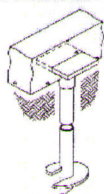
Slab Underpinning with  
Atlas Piers® Resistance Products

#### SOIL RETENTION



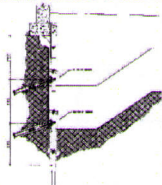
Retain with Atlas Helical™  
New Construction Products

#### NEW CONSTRUCTION



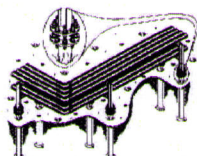
Support with Atlas Helical™  
New Construction Products

#### UNDERPINNING & SHORING



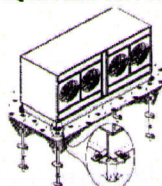
Underpinning with Atlas Piers®  
Resistance Products & Shoring  
with Atlas Helical™ Products

#### PIPELINE SUPPORT



Support with Atlas Helical™  
New Construction Products

#### EQUIPMENT SUPPORT



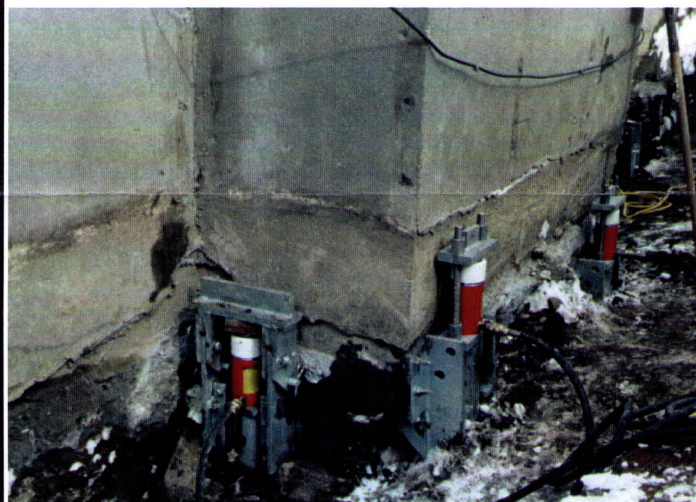
Support with Atlas Helical™  
New Construction Products



**Prior to Lift**



**Pier Installation**



**Lift in Progress**



**Project Completed**

## SOIL TECHNOLOGIES\*

140 Oxford Road  
Oxford, CT 06478-1943  
Phone: (203) 888-4531 Fax: (203) 888-6247  
White Plains, NY: (914) 946-4850

\*A DIVISION OF SOILTESTING, INC.

### TECHNICAL BULLETIN

August 2003

**PROJECT:** Underpinning and Lifting  
Of Residential Structure  
Croton - on - Hudson, NY

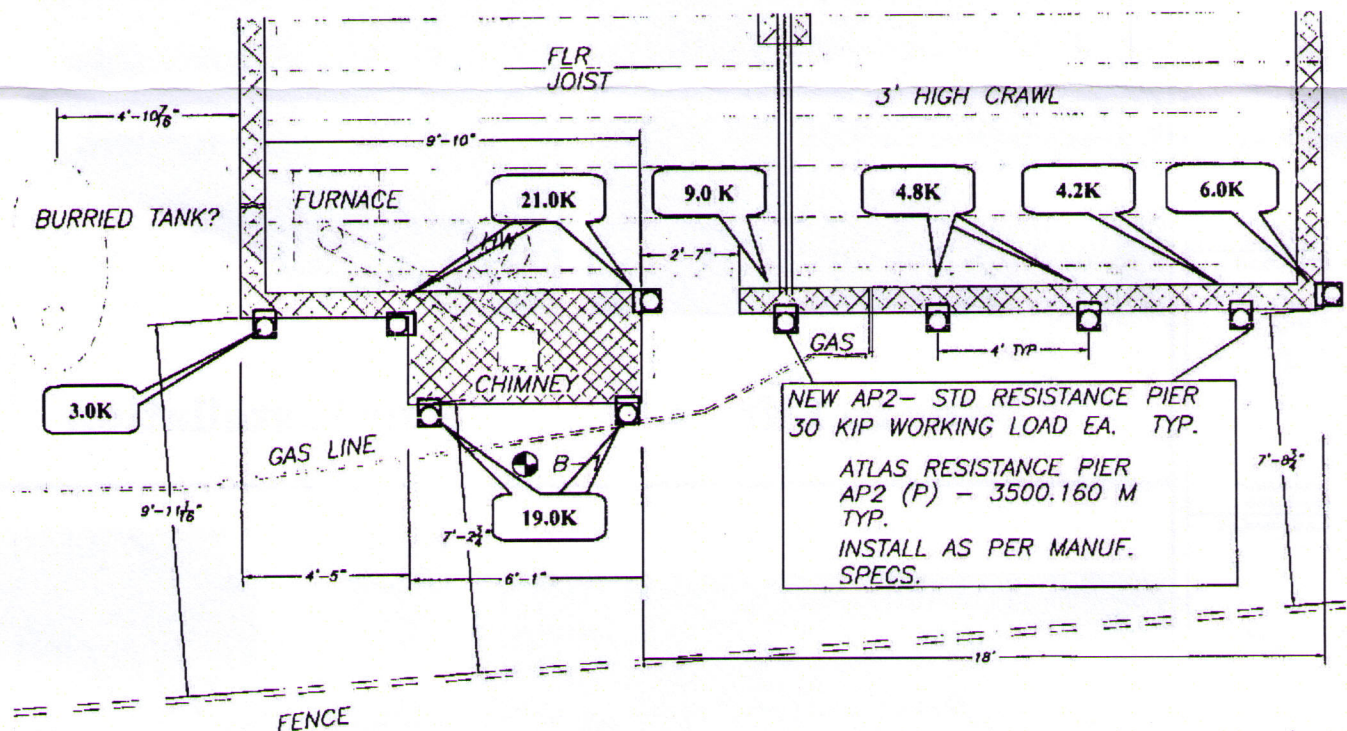
#### PROJECT INFORMATION

**Problem:** Foundation settlement along exterior wall, chimney out of plumb approximately  $\frac{1}{2}$ " per 1' or 11" over 24'

**Solution:** Installation of ATLAS Resistance Piers by SOIL TECHNOLOGIES, A DIVISION OF SOILTESTING, INC.

**Result:** Any further settlement along foundation wall stopped.

Settlement at chimney stopped and reversed. Chimney was brought back to within 2" in 24' height (from 11" out).



#### PARTIAL FOUNDATION PLAN

SCALE:  $\frac{1}{4}" = 1'-0"$   
APPROXIMATE

- A total of 10 (ten) ATLAS Piers were installed with preloads ranging from 3 kips to 21 kips.
- 4 (four) Resistance Piers were installed at chimney foundation and chimney rotated/lifted to bring back into plumb (2 directions).

**Atlas Resistance Piers** are commonly used to stop and reverse foundation settlement. Typical working loads for 2 7/8" to 4 1/2" diameter piers range from 30 to 55 kips.